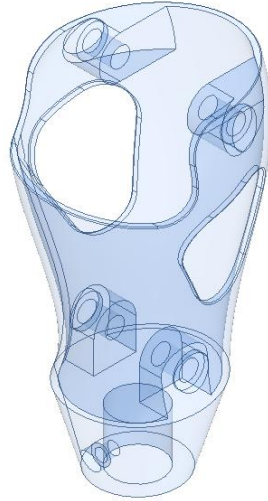




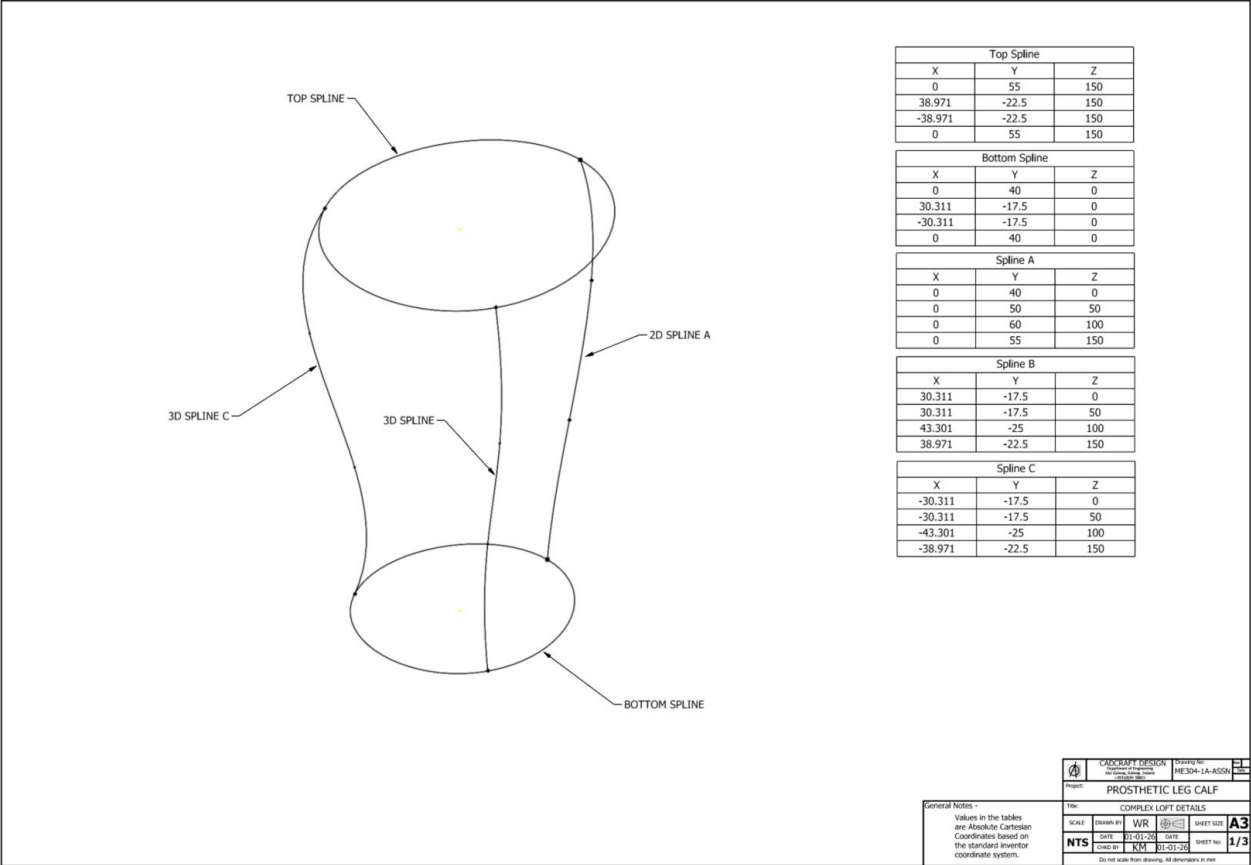
## Year 3: Engineering: Tutorial 2



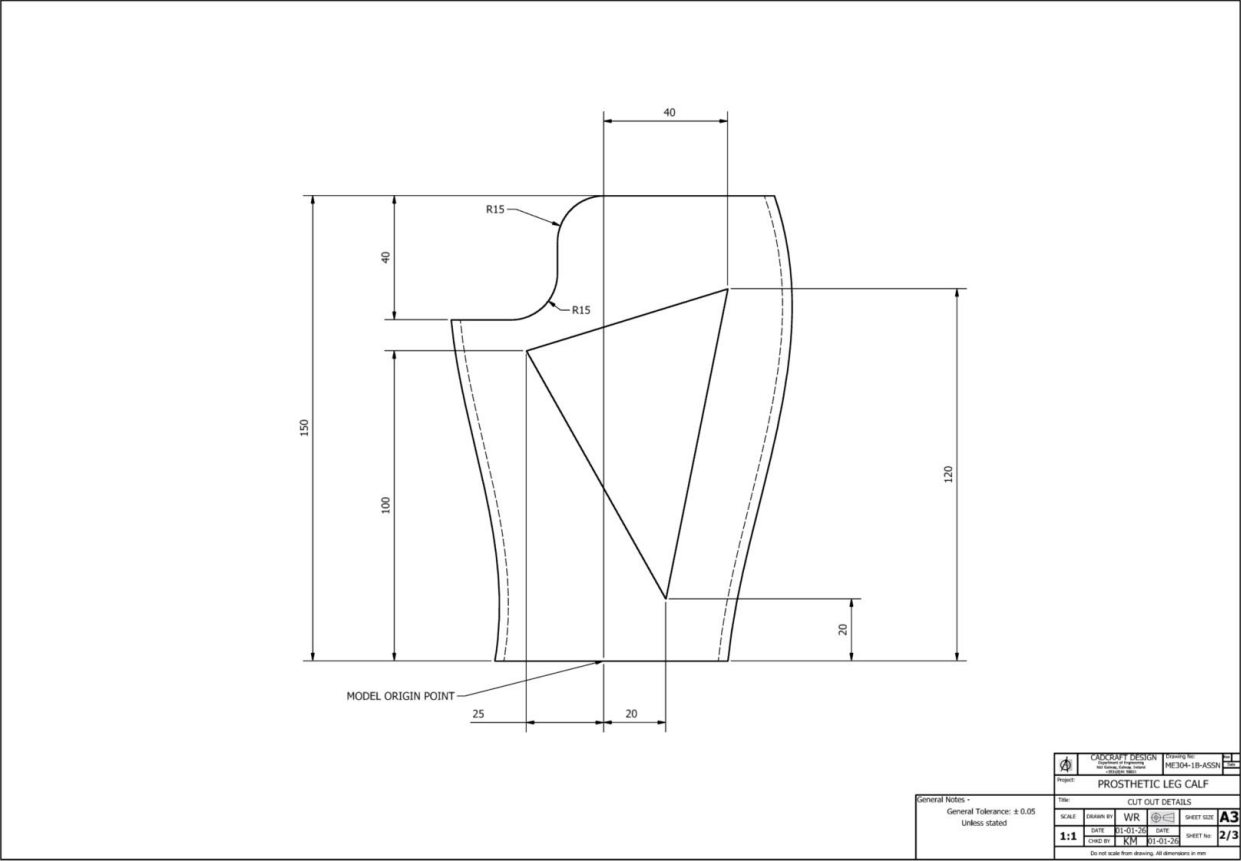
### Instructions:

- Model the Prosthetic leg calf based on the details given in the drawings.
- Save the completed model as Tutorial 2.ipt
- This part file will also be used in Tutorial 3 and the Assignments.
- Save as Tutorial 2.ipt for handing in.

: Complex Loft Details



: Cut Out Details



: Calf Details

